

# KIBRON G-BAM

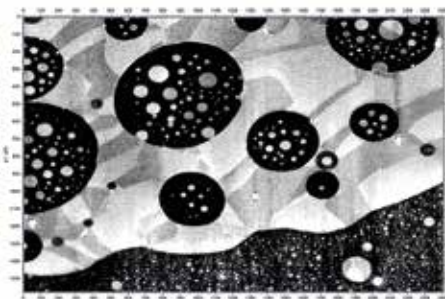
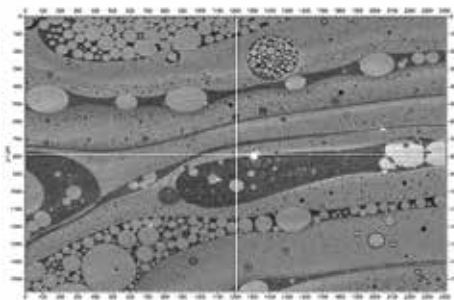
technical data sheet



## Advanced Safety Features for Brewster Angle Microscope (BAM)

**Optional Opaque Black Enclosure:** For additional safety, an optional opaque black enclosure is available. This accessory is designed to fully contain the beam, preventing any escape of laser light and maintaining a controlled environment during operation.”

**Interlock System:** Provided as a standard feature with the BAM, the interlock system ensures enhanced operational safety. It utilizes a magnetic trigger in the lid to automatically deactivate the beam if the enclosure is opened, effectively preventing unintended exposure.



## PRECISION AT LIQUID INTERFACES

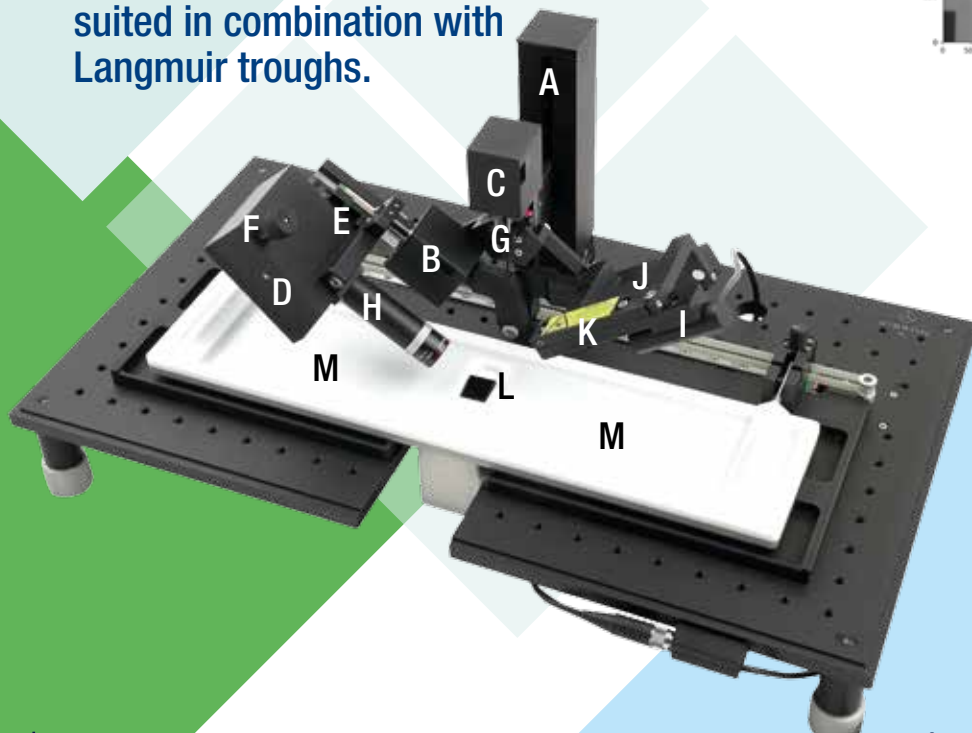
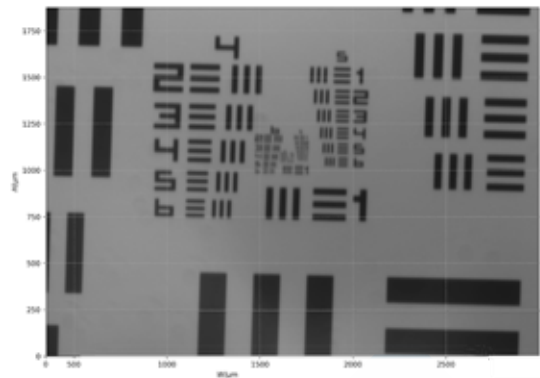
Kibron G-BAM is a fully motorized Brewster angle microscope designed for seamless integration with our Langmuir troughs. The G-BAM mounts directly on the baseplate of our G-series troughs.



KIBRON

# KIBRON G-BAM

Brewster angle microscopy is an optical setup to view molecular monolayers. It is especially well suited in combination with Langmuir troughs.



## SPECIFICATIONS

### Angle of incidence

- 45-60° Motorized, automatic search

### Focus

- Motorized

### Height

- Motorized, automatic search/tracking of changes in surface level

### Light source

- 660 nm, single mode diode laser

### Polarizer

- Sheet polarizer, manually rotatable

### Camera

- USB, 2048 x 1536 px, global shutter

### Image resolution

- < 4  $\mu\text{m}$

### Field of view

- 2140  $\mu\text{m}$  x 1720  $\mu\text{m}$

### Image

- Geometrically corrected, overall focused at 53°

### Background compensation

- Adaptive

### Power supply

- USB

### Acquisition

- Manual, or triggered by time, surface pressure or trough area

## Most important parts of the brewster angle microscope.

- A) Height motor and lift
- B) Focus motor
- C) Angle motor for goniometer
- D) Camera
- E) Polarizer, allen screws for turning and locking polarizer
- F) Camera tilt knob
- G) Goniometer, ca. 40-60 degrees.
- H) Lens, default 4X finite conjugate, 0.10 NA, RMS thread.
- I) Laser
- J) Horizontal alignment screws for laser
- K) Vertical alignment screws for laser
- L) Wedge for beam absorption and deflection
- M) Wedged barriers to allow for maximum compression without interfering with the beam.
- N) (Not shown) Screw knob below the baseplate for attaching the microscope to the trough.



KIBRON

Kibron Inc. manufactures state-of-the-art tensiometers, langmuir-blodgett troughs as well as customer specified surface chemistry equipment. Since its founding, 1994, Kibron has focused on innovation, user benefits and dependable service.

Kibron Inc.  
Malminkaari 23 C, FI-00700 Helsinki, tel +358 10 2811670, www.kibron.com, info@kibron.com