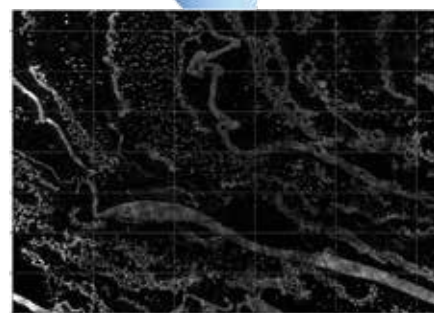
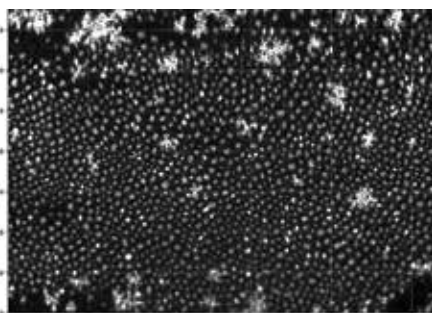
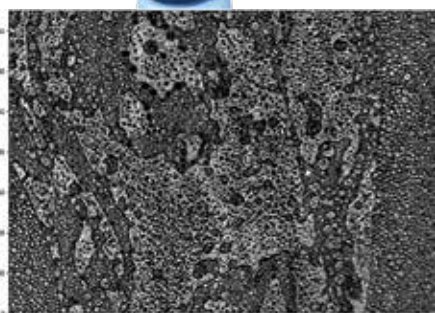
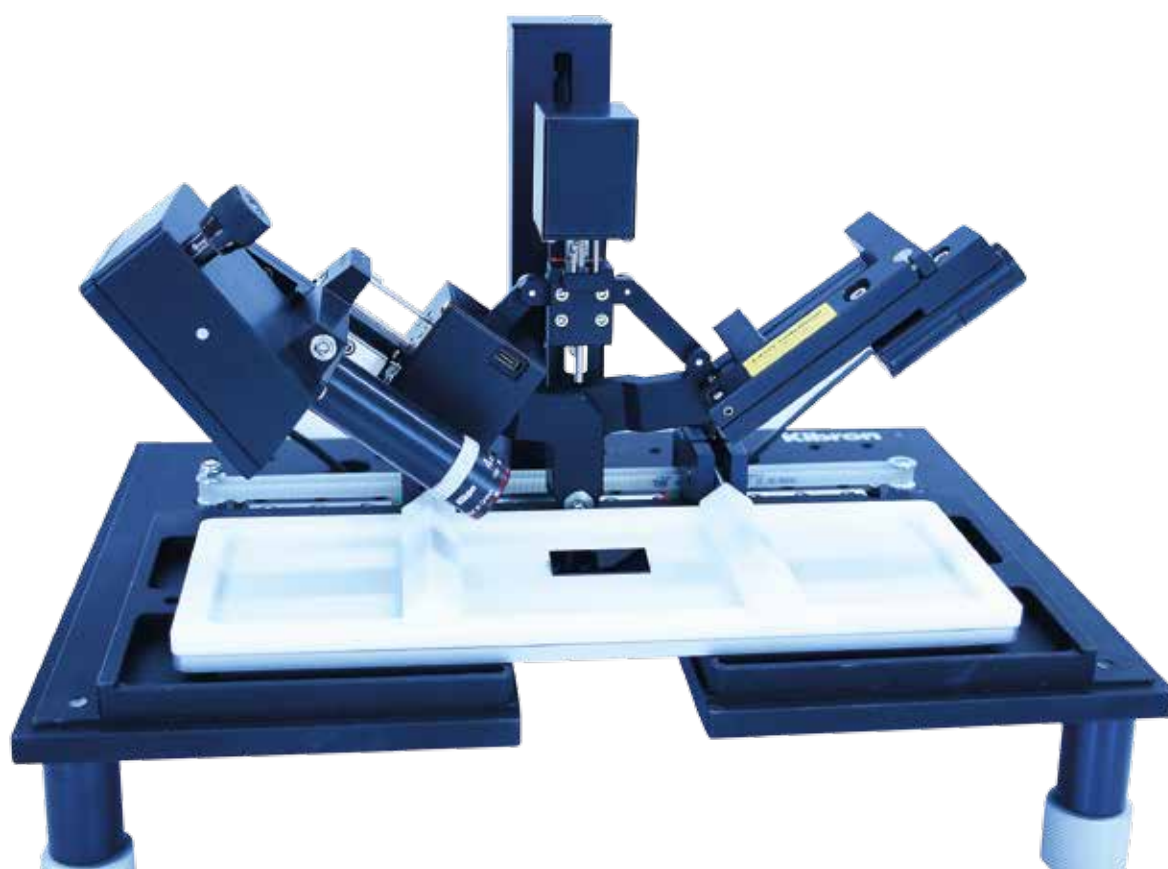


KIBRON G-BAM

technical data sheet



Kibron G-BAM is a fully motorized Brewster angle microscope designed for seamless integration with our Langmuir troughs. The G-BAM mounts directly on the baseplate of our G-series troughs.

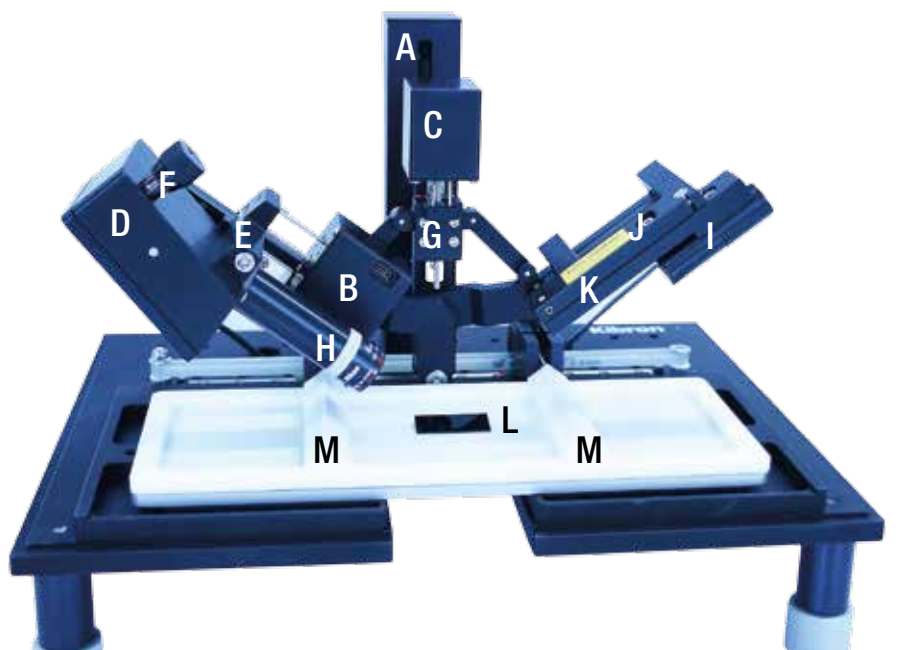
Surface tension – precisely



Kibron

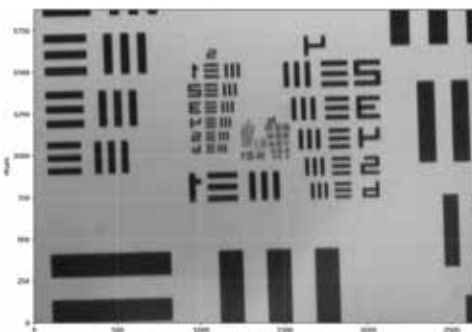
KIBRON G-BAM

Brewster angle microscopy is an optical setup to view molecular monolayers. It is especially well suited in combination with Langmuir troughs.



Most important parts of the brewster angle microscope.

- | | |
|--|---|
| A) Height motor and lift | L) Wedge for beam absorption and deflection |
| B) Focus motor | M) Wedged barriers to allow for maximum compression without interfering with the beam. |
| C) Angle motor for goniometer | N) (Not shown) Screw knob below the baseplate for attaching the microscope to the trough. |
| D) Camera | |
| E) Polarizer, allen screws for turning and locking polarizer | |
| F) Camera tilt knob | |
| G) Goniometer, ca. 40-60 degrees. | |
| H) Lens, default 4X finite conjugate, 0.10 NA, RMS thread. | |
| I) Laser | |
| J) Horizontal alignment screws for laser | |
| K) Vertical alignment screws for laser | |



SPECIFICATIONS

- Angle of incidence**
 - 45-60° Motorized, automatic search
- Focus**
 - Motorized
- Height**
 - Motorized, automatic search/tracking of changes in surface level
- Light source**
 - 660 nm, single mode diode laser
- Polarizer**
 - Sheet polarizer, manually rotatable
- Camera**
 - USB, 2048 x 1536 px, global shutter
- Image resolution**
 - < 4 μm
- Field of view**
 - 2140 μm x 1720 μm
- Image**
 - Geometrically corrected, overall focused at 53°
- Background compensation**
 - Adaptive
- Power supply**
 - USB
- Acquisition**
 - Manual, or triggered by time, surface pressure or trough area



Kibron Inc. manufactures state-of-the-art tensiometers, langmuir-blodgett troughs as well as customer specified surface chemistry equipment. Since its founding, 1994, Kibron has focused on innovation, user benefits and dependable service.

Kibron Inc.
Malminkaari 23 C, FI-00700 Helsinki, tel +358 10 2811670, www.kibron.com, info@kibron.com